

CERTIFICATE OF LOCATION OF GOVERNMENT CORNER

EAST QUARTER Corner of Section 12, Township 106 N., Range 43 W., 5th P.M.

STATE OF MINNESOTA, County of MURRAY

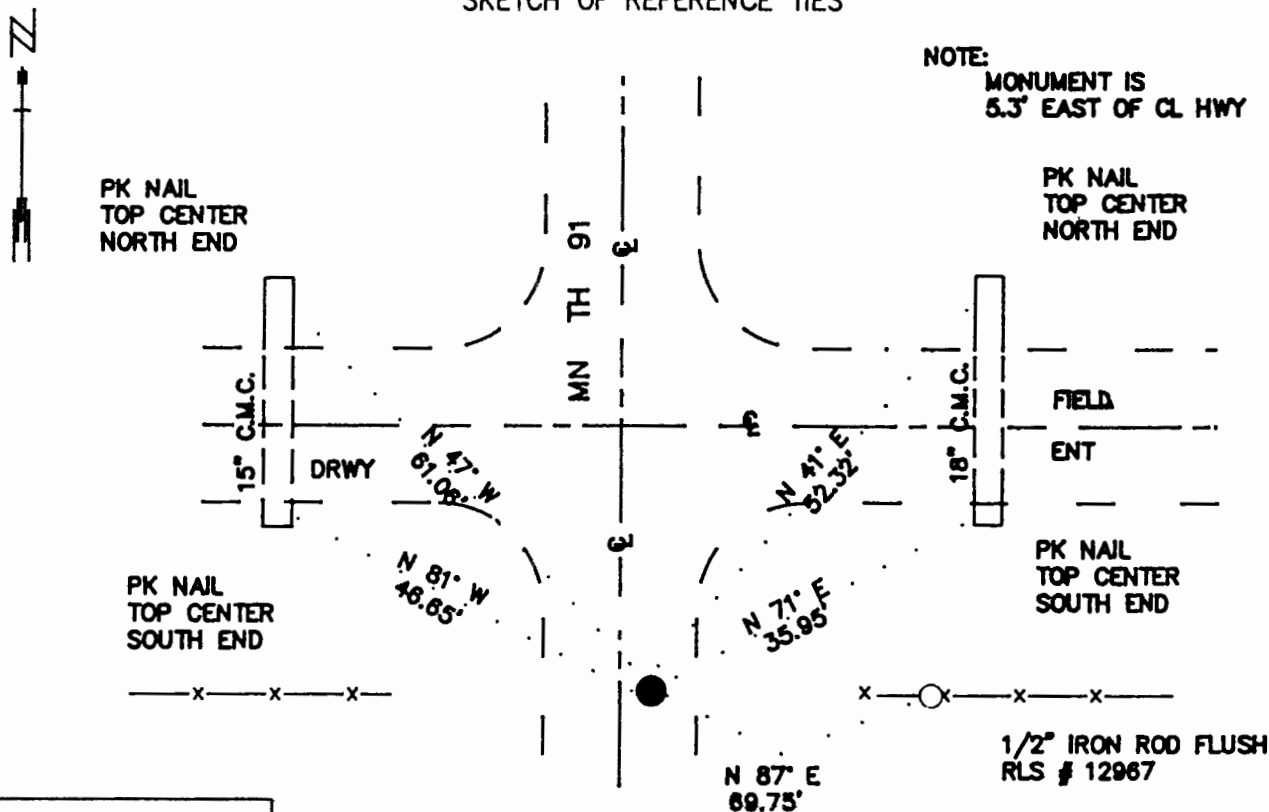
At the corner location shown on the sketch:

On 5/3/89 found a IRON ROD, DOWN 0.1' WITH RLS #12967 ON CAP
DATE

left monument as found, lowered monument, removed monument (explain)

On _____ Placed a _____
DATE

SKETCH OF REFERENCE TIES



NOTE:
MONUMENT IS
5.3' EAST OF CL HWY

1983 MURRAY COUNTY
COORDINATE SYSTEM

N=155699.923
E=453407.854

BEARINGS OBSERVED WITH COMPASS

Statement of evidence relative to this corner location is on back of page.

7/12/89
G-1225

I hereby certify that this document and the data contained herein was prepared by me or under my direct supervision.

Lowell B. Pommeroy 7-21-89
SIGNATURE DATE

Registration No. 17005

Land Surveyor, Professional Engineer
 County Surveyor, County Engineer

OFFICE OF THE COUNTY RECORDER
County of Murray

I hereby certify that this document was filed in the Co. recorders office at 10:00 A.M. on the 24th day of July A.D., 1989

County Recorder James V. Johnson
By _____, Deputy

DOCUMENT NO. _____

East Quarter Corner of Section 12, Township 106 North, Range 43 West

The DNR Bureau of Engineering contacted the following offices for survey information:

MN Secretary of State's Office
Murray County Offices of the Recorder and Highway Engineer
Mn/DOT Office in St. Paul
Mn/DOT Office in Willmar
Sioux Engineering, Inc., Office in Windom
Madsen Land Surveying Office in Fairmont
Bell Surveying, Inc., Office in Worthington
Lyle Moseng and Associates Office in Marshall

- 1861 U.S. General Land Office notes obtained from the Secretary of State's Office show the corner marked with a post in a mound of earth and sod with trench and pits as per instructions. Charcoal was deposited in the mound.
- 1887 Surveyor's Record Book A, on page 39, obtained from the County Recorder's Office contains a survey, surveyor not indicated. Survey shows corner but does not indicate what was found or set. The corner is shown:
496.32 feet from a point on the east line of Section 12 which is also on the northerly right-of-way of the Chicago, St. Paul, Minneapolis and Omaha Railway
- 1898 Surveyor's Record Book A, on page 74, obtained from the County Recorder's Office contains a survey by J. W. Woolstencroft. Survey shows corner but does not indicate what was found or set. The corner is shown:
40.10 chains (2646.6') from the northeast corner of Section 12
- 1917 Right-of-way map for Chicago, St. Paul, Minneapolis, and Omaha Railway obtained from the DNR Bureau of Engineering shows a highway crossing along the east line of Section 12 at Station 1884+80. A description of a monument at corner is not given and no distances are shown to it.
- No Date Right-of-way map for Minnesota Trunk Highway 91 obtained from the Mn/DOT Office in St. Paul shows an iron pin in place at corner. The corner is shown:
2647.3 ft. from the northeast corner of Section 12
495.3 ft. from a point on the east line of Section 12 which is also on the northerly right-of-way of the Chicago, St. Paul, Minneapolis, and Omaha Railway
5.3 ft. east of POT Station 105+54.3 in line with fences east and west
- 1981 Field notes, worksheets, and a certificate of survey by Gary D. Martin, RLS #12967, obtained from Madsen Land Surveying show that corner could not be located. Corner was reset per Mn/DOT data and a 1/2" rebar with a cap was set to mark its location. The following ties are shown to corner:
2647.3 ft. from the northeast corner of Section 12
5.3 ft. east of the center line of Highway 91 in line with fence east
2588.24 ft. from the northeast corner of Section 12 *
* (Note: GLO did not set this corner)
5236.32 feet (5280'-GLO) from the east quarter corner of Section 13
brass tag in gate post, N. 63° E., 70.65 feet
1/2" rebar and cap, N. 85° E., 69.70 feet
brass tag in corner fence post, N. 71° W., 83.46 feet
- 1982 A certificate of survey by Gary D. Martin, RLS #12967, obtained from Madsen Land Surveying shows that a 1/2" iron reinforcing bar with cap which was previously set was found at corner.
- 1989 The DNR Bureau of Engineering conducted a search for this corner and found a 1/2" iron rod with plastic cap stamped "RLS #12967", down 0.1 ft.. Iron rod measures:
5.3 ft. east of center line north-south road
in line with fences east and west
Searched for and found only one record tie as shown.

Analysis of the available information led the DNR Bureau of Engineering to conclude that the found iron rod marks the location of the corner.